

3D Delta Printer

<http://www.deltaprinter.co.za>

General information

Local suppliers of 3d printer parts

<http://secure-www.openhardware.co.za/cart/>

<http://robotics.org.za/>

<http://www.fabric8.co.za/>

<http://www.nanitech.co.za/3d-printers.html>

<http://www.abs-filament.co.za/>

<http://www.netram.co.za/>

<http://www.taito3d.co.za/>

<http://www.fabit3d.co.za/>

<http://www.3d-printer.co.za>

<http://www.3d-print.co.za>

<http://www.hobbytronics.co.za/>

Forums

<https://groups.google.com/forum#!forum/deltabot>

<http://forums.reprap.org/list.php?178>

<http://forum.seemecnc.com>

Other

<https://github.com/jcrocholl/kossel>

<http://www.flickr.com/photos/jcrocholl/tags/kossel>

<https://plus.google.com/u/0/photos/110997713826931701065/albums/5773609700932594497>

<https://plus.google.com/photos/108445838894930891556/albums/5831544897289918977>

<https://github.com/drogge/kossel>

https://github.com/faeton13/Kossel_T

<http://www.deltaprinter.com/>

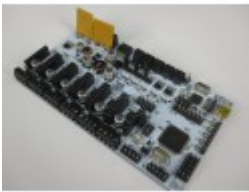
Delta printer components

Electronics

RAMPS 1.4 or equivalent(RAMBO,RUMBA(very cost effective),Azteeg X3,Megatronics,Printboard)

RAMPS requires an Arduino ATmega to work, the others are single board solutions.

<https://ultimachine.com/rambo>
www.reprapdiscount.com



http://reprap.org/wiki/Azteeg_X3
http://reprapworld.com/?searchresults&cPath=1591_1643
<http://makemendel.com/mechanical-parts/electronics-parts/printboard>

4 x stepper motor Drivers

A4988 Pololu compatible driver(need fans on all the time) or

DRV 8825 Designed by Kliment Pololu compatible driver



4 x Endstops (1 of 4 for the automatic bed level calibration)



LCD Controller (not needed BUT with it you can run printer independently from computer)



Power supply (use modified computer power supply)

Stepper Motors

4 x NEMA 17 as strong as possible

http://robotics.org.za/index.php?route=product/product&path=241&product_id=246

http://www.stepperonline.com/stepper-motor-nema-17-stepper-c-1_21.html

Hotends

J-Head www.hotends.com



E3D <http://e3d-online.com/>

AluhotendV4-1.75mm - www.3dindustriesaustralia.com.au

Budaschnozzle

Build your own hotend

<http://www.deltaprinter.co.za/hotend>



(If you build your own hotend you will need the following electronics)

1 x 100K ohm EPCOS B57560G104F NTC THERMISTOR



1 x Ceramic Cartridge Heater 40W



Heatbed

MK2A Heated Bed www.reprapdiscount.com



Build your own heatbed

<http://www.deltaprinter.co.za/heatbed>

(If you build your own heatbed you will need the following electronics)

4 x PTC Heater for crimper 80/100/150/200/230/270 220V (select 100 degrees)

http://www.aliexpress.com/store/product/PTC-Heater-for-crimper-80-100-150/508447_705279584.html



Filament feeder

Airtripper's Direct Drive Bowden Extruder V3

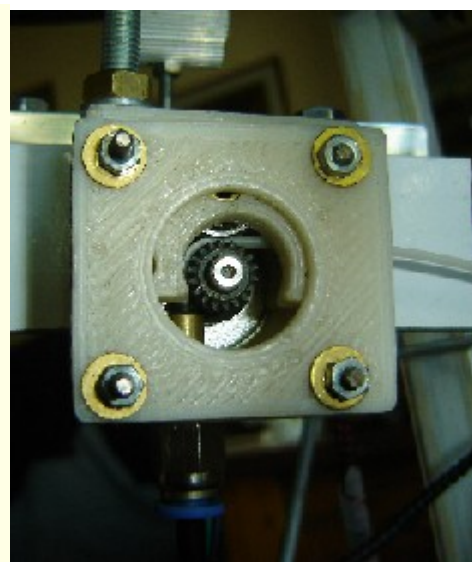
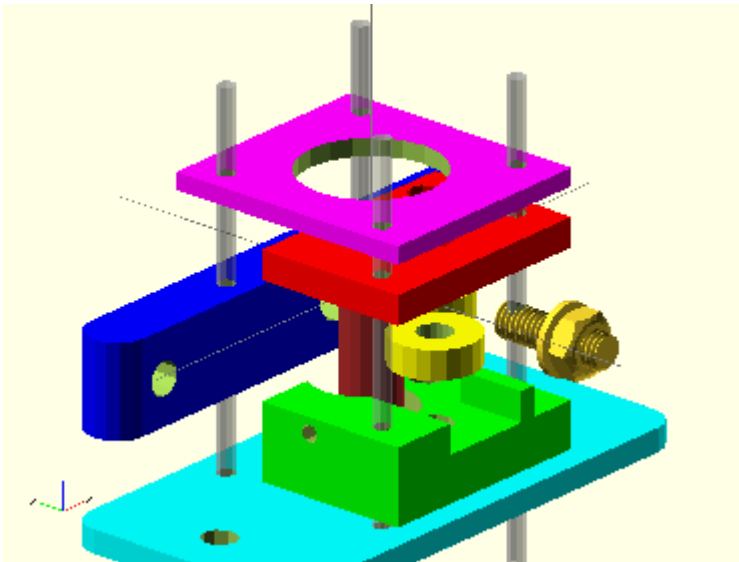


<http://www.thingiverse.com/thing:35404>

Print your own 2 bearing filament feeder

<http://www.deltaprinter.co.za/filamentfeeder>

You will need 2 x 696zz bearings



Bearings

<http://www.bearingman.co.za>

Rod ends

Magnets (if you are going the magnetic connector route)



<http://magnetech.co.za/>

Traxxas Turnbuckles (if you not going the magnetic connector route)

readily available in the model shops



Belts or string

zero stretch braided fishing line or Braided Cotton thread at crafters shops



Pulleys

Custom made pulleys and rollers at <http://www.vesconite.com/>

Pneumatic tube and fittings



Fasteners

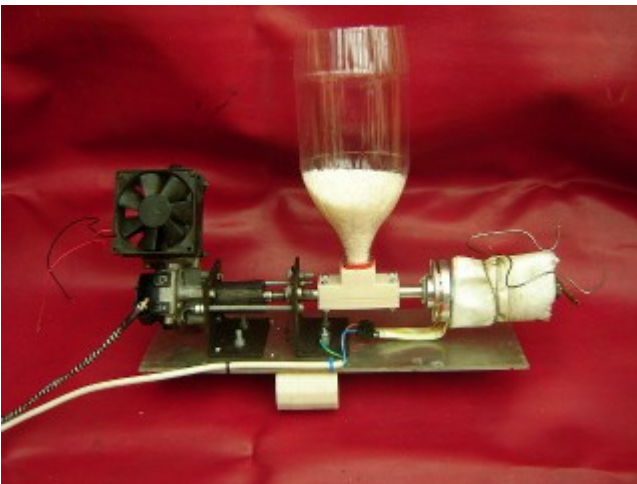
mostly M3 (some M4 and M6)

Aztec fasteners

Filament

Build your own filament extruder

<http://www.deltaprinter.co.za/filamentextruder>



Aluminium composite sheeting

KömAlu comprises two aluminium sheets sandwiching a polyethylene core
www.maizey.co.za

Calibration of Delta printer

<http://minow.blogspot.com/>

<http://www.youtube.com/watch?v=XmP9JQPAIr4&feature=youtu.be>

<https://gist.github.com/kastner/4772276>

Automatic bed leveling probe on Mini Kossel (video)

<https://groups.google.com/forum/#!topic/deltabot/a6gow3KotQk>

<http://flickr.com/photos/jcrocholl/tags/retractable>

Arduino software

To upload the firmware to the Arduino compatible control board

<http://arduino.cc/en/Main/Software>

Firmware

Firmware is the software that runs on the control board on your printer.

Repetier-Firmware <https://github.com/sousoux>

Marlin firmware by Johan Rocholl(who wrote the original firmware for the Delta printer)

<https://github.com/jcrocholl/Marlin>

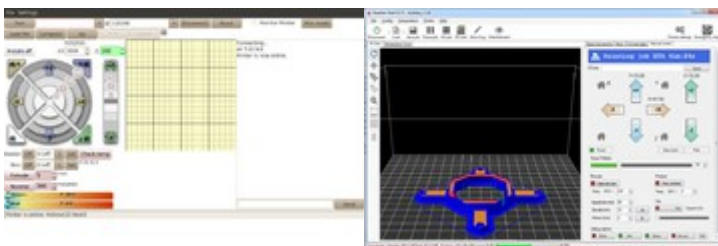
Interface Software

To print the article directly via usb cable to printer or to upload your article to SD card on the LCD controller. Article to be created in .stl format(various open source programs can export the article in .stl format - Openscad <http://www.openscad.org> being one of them)

Printrun

<http://www.repetier.com/download/>

Repetier-Host



Slicing Software:

Slic3r (incorporated in Repetier-Host)

<http://slic3r.org/>



KISSlicer

<http://kisslicer.com/>

Skeinforge

Cura